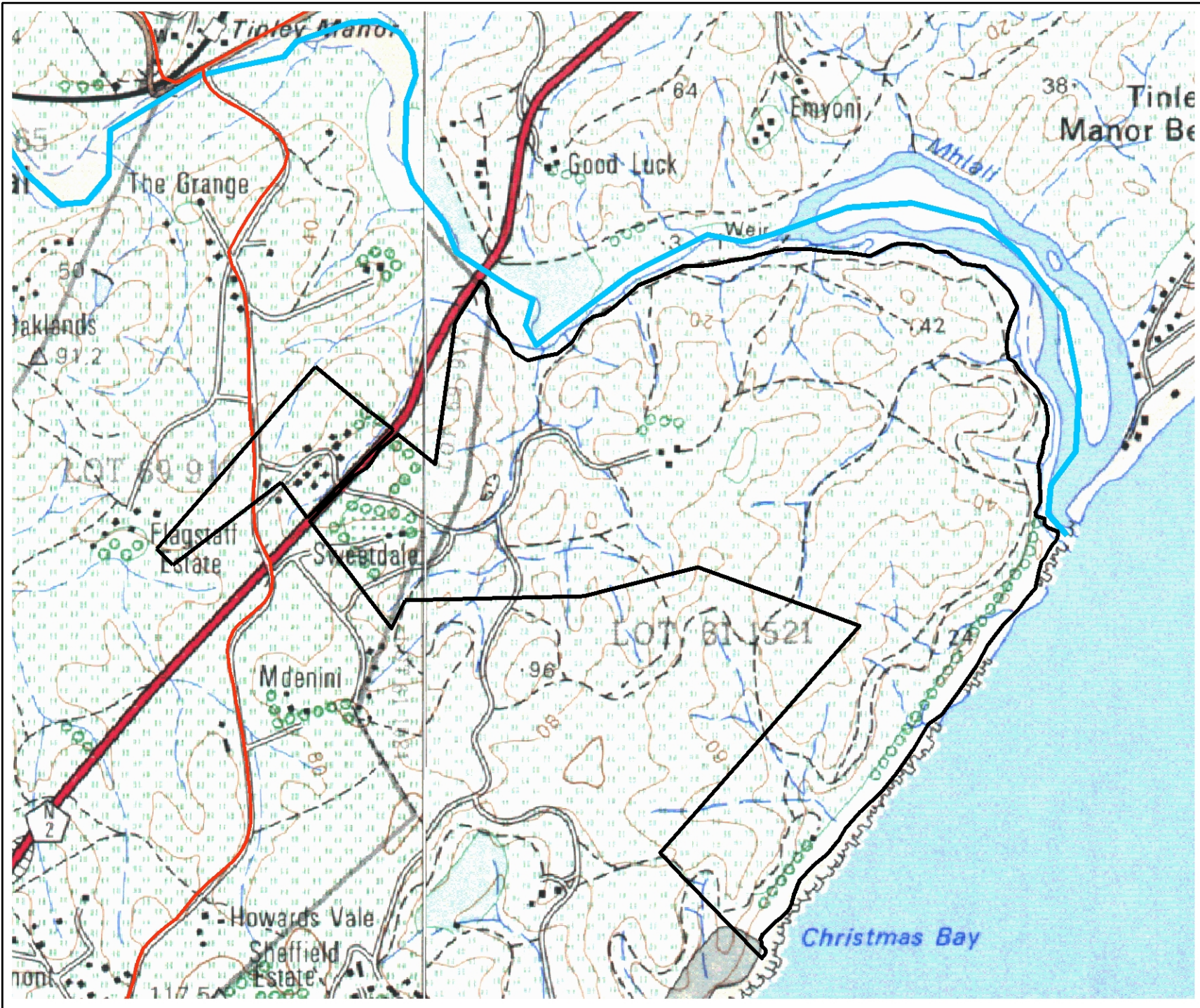







APPENDIX 1: LOCALITY

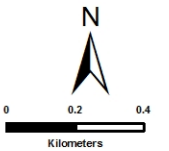


**Tinley Manor South
Locality Map
1:50 000**

Legend

-  Boundary
-  P228 Road
-  Umhlali River

SOURCE: Chief Directorate of Survey and Mapping




SiVEST
 ENVIRONMENTAL DIVISION
 170 PETER BROWN DRIVE
 VCC ESTATE
 NORTH VIEW BUILDING
 PIETERMARITZBURG, 3201
 SOUTH AFRICA
 Phone: +27 33 347 1600
 Fax: +27 33 347 1782
 e-mail: info@sivest.co.za

| Project No | Map Ref No | Prepared By | Date |
|------------|------------|-------------|------------|
| 13111 | 13111/05 | L.BERTOLLI | 03/01/2015 |

"COPYRIGHT IS VESTED IN SIVEST IN TERMS OF THE COPYRIGHT ACT (ACT 98 OF 1978) AND NO USE OR REPRODUCTION OR DUPLICATION THEREOF MAY OCCUR WITHOUT THE WRITTEN CONSENT OF THE AUTHOR"

THIS MAP HAS BEEN PREPARED UNDER THE CONTROLS ESTABLISHED BY THE SIVEST QUALITY MANAGEMENT SYSTEM AND MEETS THE REQUIREMENTS OF THE SETA QUALITY GRADING SYSTEM THAT IS ISO COMPLIANT





APPENDIX 2: AERIAL

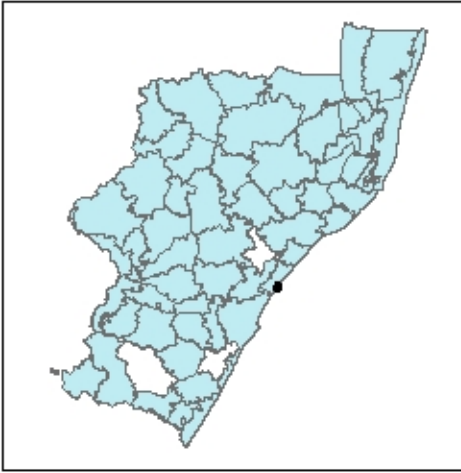


Tinley Manor

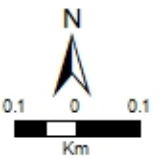
Aerial Map

Legend

 Boundary



SOURCE: Chief Directorate of Survey and Mapping



SIVEST
 ENVIRONMENTAL DIVISION
 VCC ESTATE
 NORTH VIEW BUILDING
 PLOERSWATERSBURG 2201
 SOUTH AFRICA
 Phone: +27 22 347 1000
 Fax: +27 22 347 5100
 Email: info@sivest.co.za

| Project No | Map Ref No | Prepared By | Date |
|------------|------------|-------------|------------|
| 12111 | 12111/02 | LIBERTOLI | 05/03/2015 |

"COPYRIGHT IS RESERVED IN SIVEST IN TERMS OF THE COPYRIGHT ACT (ACT 98 OF 1978) AND NO USE OR REPRODUCTION OR QUOTATION THEREOF MAY OCCUR WITHOUT THE WRITTEN CONSENT OF THE AUTHOR"

THIS MAP HAS BEEN PREPARED UNDER THE CONDITIONS ESTABLISHED BY THE SIVEST QUALITY MANAGEMENT SYSTEM AND MEETS THE REQUIREMENTS OF THE SEA QUALITY GRADING SYSTEM (SAQS) ISD COMPLIANT






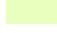




APPENDIX 3: CBA MAP

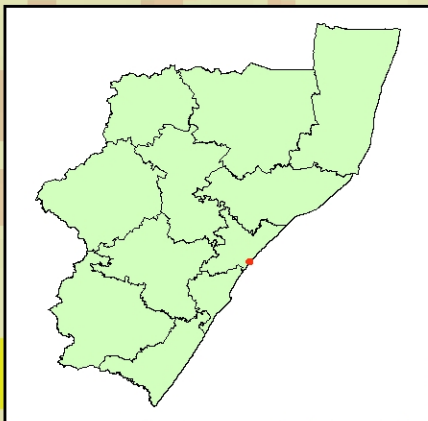
Tinley Manor South

CBA Map

Legend

-  Boundary
-  CBA Irreplaceable Terrestrial
-  CBA Optimal Terrestrial
-  CBA Irreplaceable Aquatic
-  ESA Optimal Aquatic
-  ESA Terrestrial
-  Transformed
-  Natural land

SOURCE: Chief Directorate of Survey and Mapping



0 0.2 0.4
Kilometers

SiVEST
ENVIRONMENTAL DIVISION
170 PETER BROWN DRIVE
VCC ESTATE
NORTH VIEW BUILDING
PIETERMARITZBURG, 3201
SOUTH AFRICA
Phone: +27 33 347 1600
Fax: +27 33 347 1782
e-mail: info@sivest.co.za

| Project No | Map Ref No | Prepared By | Date |
|------------|------------|-------------|------------|
| 13111 | 13111/06 | L.BERTOLLI | 03/01/2015 |

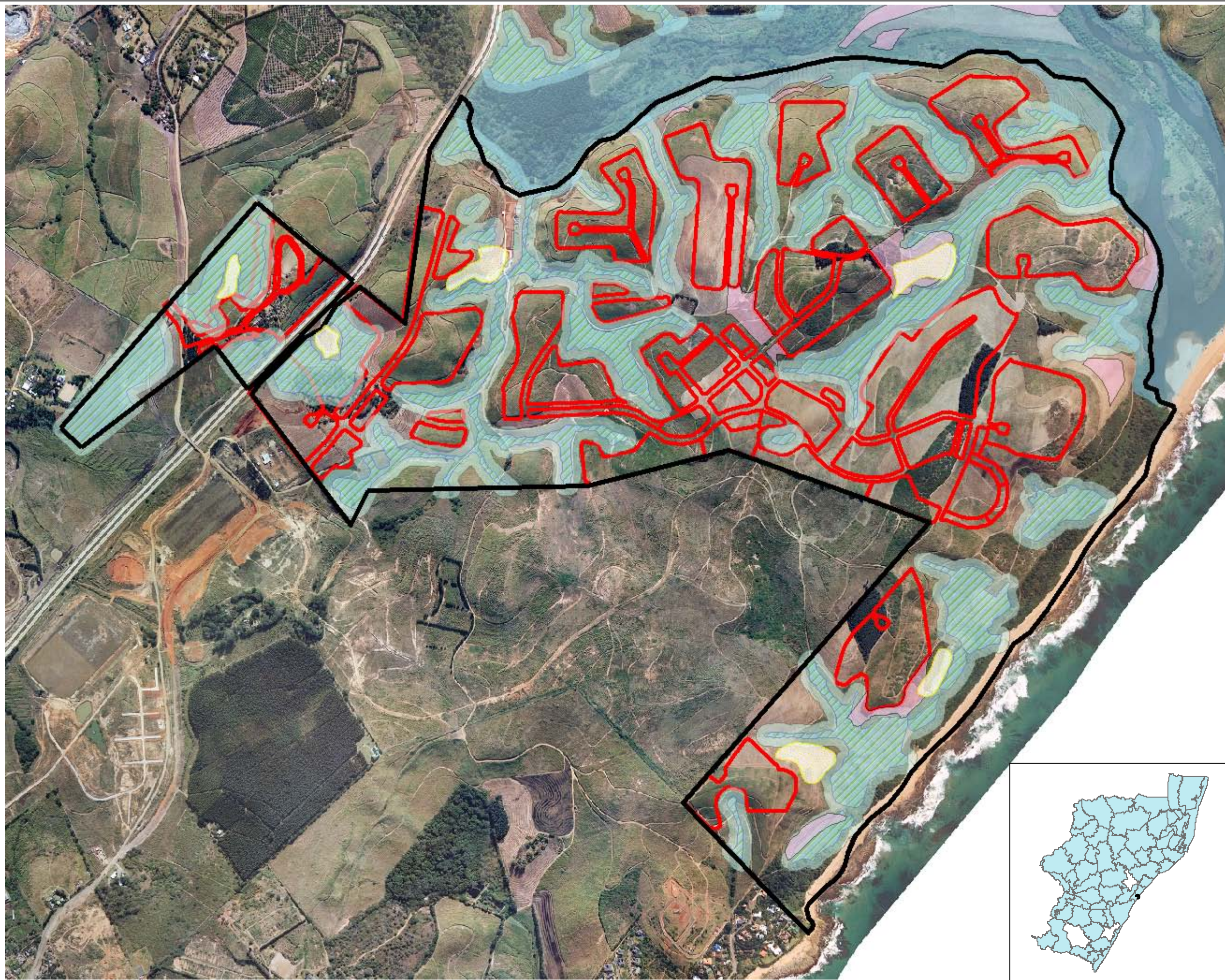
"COPYRIGHT IS VESTED IN SIVEST IN TERMS OF THE COPYRIGHT ACT (ACT 98 OF 1978) AND NO USE OR REPRODUCTION OR DUPLICATION THEREOF MAY OCCUR WITHOUT THE WRITTEN CONSENT OF THE AUTHOR"

THIS MAP HAS BEEN PREPARED UNDER THE CONTROLS ESTABLISHED BY THE SIVEST QUALITY MANAGEMENT SYSTEM AND MEETS THE REQUIREMENTS OF THE SETA QUALITY GRADING SYSTEM THAT IS ISO COMPLIANT



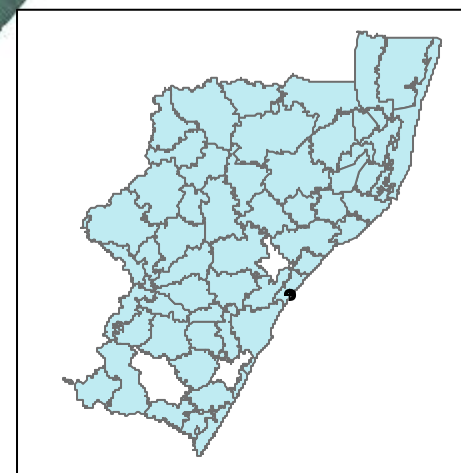


APPENDIX 4: LAYOUT MAP



Tinley Manor Proposed Development Layout

- Legend**
- Boundary
 - February 2015 Layout
 - Pond Outline
 - Recreational areas
 - Floodplain
 - Wetlands



SOURCE: Chief Directorate of Survey and Mapping

N

0.1 0 0.1

Km

SIVEST

ENVIRONMENTAL DIVISION
370 PETER BROWN DRIVE
VOC ESTATE
NORTH VIEW BUILDING
PIETERMARITZBURG, 3201
SOUTH AFRICA

Phone: +27 33 347 1600
Fax: +27 33 347 5762
email: info@sivest.co.za

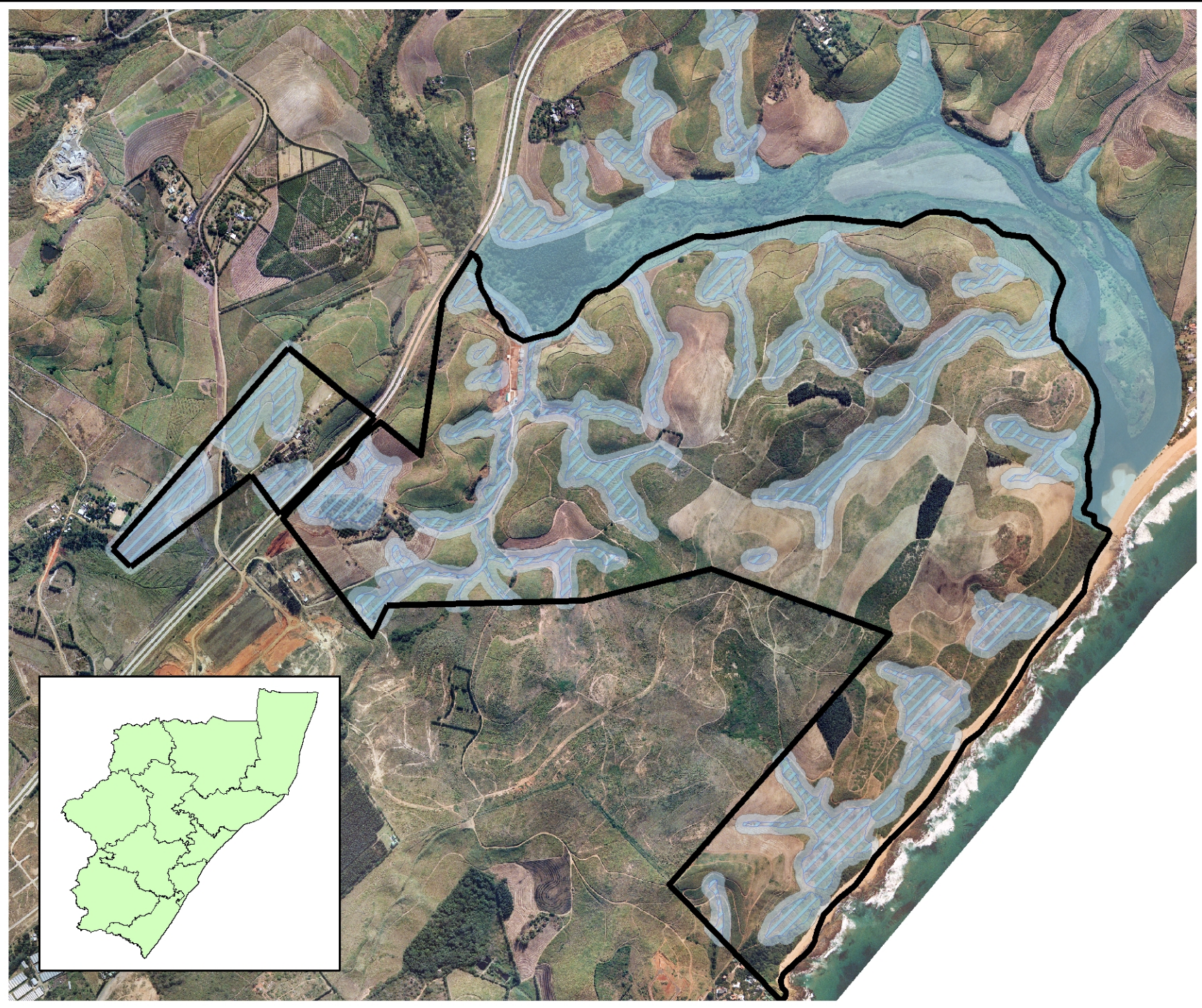
| Project No | Map Ref No | Prepared By | Date |
|------------|------------|-------------|------------|
| 13111 | 13111/02 | L.BERTOLLI | 05/03/2015 |

© COPYRIGHT IS VESTED IN SIVEST IN TERMS OF THE COPYRIGHT ACT (ACT 98 OF 1978) AND NO USE OR REPRODUCTION OR DUPLICATION THEREOF MAY OCCUR WITHOUT THE WRITTEN CONSENT OF THE AUTHOR

THIS MAP HAS BEEN PREPARED UNDER THE CONTROLS ESTABLISHED BY THE SIVEST QUALITY MANAGEMENT SYSTEM AND MEETS THE REQUIREMENTS OF THE SETA QUALITY GRADING SYSTEM THAT IS ISO COMPLIANT



APPENDIX 5: WETLAND MAP

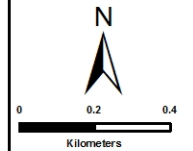


Tinley Manor South Wetland and Floodplain Map

Legend

-  Boundary
-  Wetlands
-  30m Wetland Buffer
-  Floodplain

SOURCE: Chief Directorate of Survey and Mapping




SiVEST
 ENVIRONMENTAL DIVISION
 170 PETER BROWN DRIVE
 VCC ESTATE
 NORTH VIEW BUILDING
 PIETERMARITZBURG, 3201
 SOUTH AFRICA
 Phone: +27 33 347 1600
 Fax: +27 33 347 5762
 e-mail: info@sivest.co.za

| Project No | Map Ref No | Prepared By | Date |
|------------|------------|-------------|------------|
| 13111 | 13111/01 | L.BERTOLLI | 03/01/2015 |

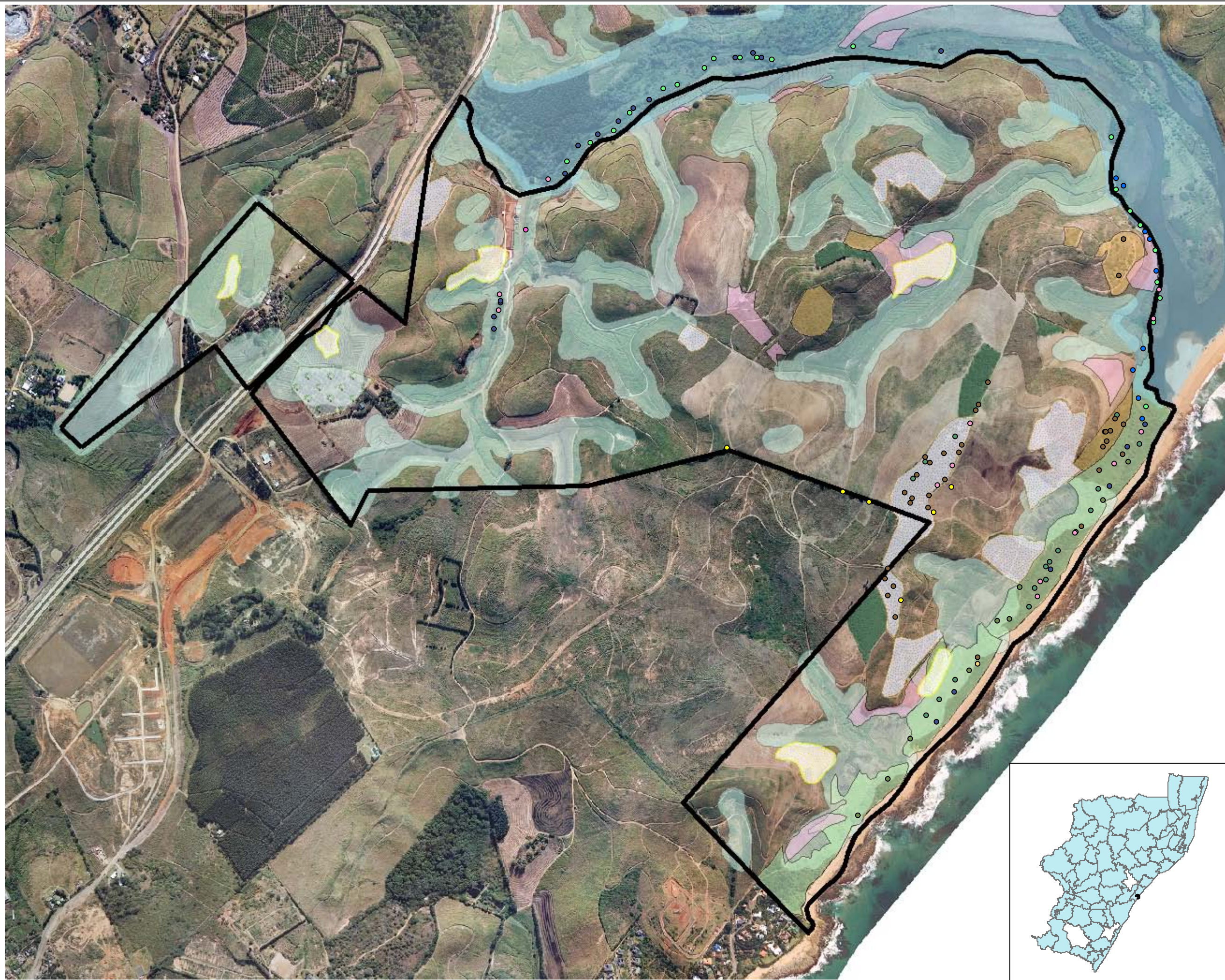
"COPYRIGHT IS VESTED IN SIVEST IN TERMS OF THE COPYRIGHT ACT (ACT 98 OF 1978) AND NO USE OR REPRODUCTION OR DUPLICATION THEREOF MAY OCCUR WITHOUT THE WRITTEN CONSENT OF THE AUTHOR"

THIS MAP HAS BEEN PREPARED UNDER THE CONTROLS ESTABLISHED BY THE SIVEST QUALITY MANAGEMENT SYSTEM AND MEETS THE REQUIREMENTS OF THE SETA QUALITY GRADING SYSTEM THAT IS ISO COMPLIANT





APPENDIX 6: VEGETATION MAP



Tinley Manor

Vegetation map

Legend

-  Pond Outline
-  Boundary
-  Recreational areas
-  Floodplain
-  Fallow land
-  Back of beach
-  Fallow land
-  Fruit Tree Grove
-  Plantation
-  Woody Fallow land

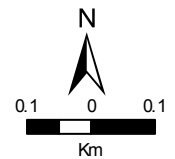
Protected Plants

- *Aloe thraskii*
- *Barringtonia racemosa*
- *Cryptocarya latifolius*
- *Drimiopsis maculata*
- *Hibiscus tiliaceus*
- *Mimusops caffra*
- *Scadoxus puniceus*
- *Sclerocarya birrea* subsp. *caffra*
- *Eugenia capensis*

Rare Plants

- *Crotalaria vasculosa*
- *Cyphostemma flaviflorum*

SOURCE: Chief Directorate of Survey and Mapping

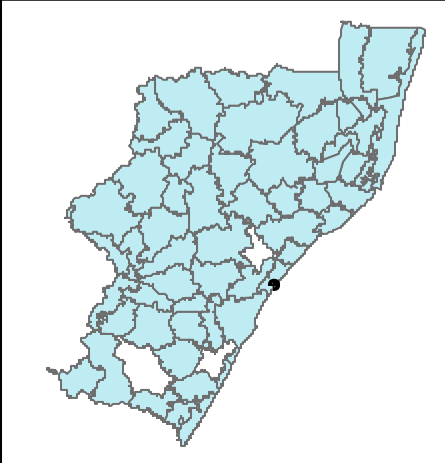


SIVEST
 ENVIRONMENTAL DIVISION
 370 PETER BROWN DRIVE
 VCC ESTATE
 10 RICH VIEW BUILDING
 PIETERMARITZBURG, 3201
 SOUTH AFRICA
 Phone: +27 33 347 1600
 Fax: +27 33 347 5762
 Email: info@sivest.co.za

| Project No | Map Ref No | Prepared By | Date |
|------------|------------|-------------|------------|
| 13111 | 13111/02 | L.BERTOLLI | 05/03/2015 |

© COPYRIGHT IS VESTED IN SIVEST IN TERMS OF THE COPYRIGHT ACT (ACT 98 OF 1978) AND NO USE OR REPRODUCTION OR DUPLICATION THEREOF MAY OCCUR WITHOUT THE WRITTEN CONSENT OF THE AUTHOR

THIS MAP HAS BEEN PREPARED UNDER THE CONTROLS ESTABLISHED BY THE SIVEST QUALITY MANAGEMENT SYSTEM AND MEETS THE REQUIREMENTS OF THE SETA QUALITY GRADING SYSTEM THAT IS ISO COMPLIANT





APPENDIX 7: SPECIES LIST

| Species name | Common name | Status | Growth form | Category |
|-------------------------------------|-------------------------------|------------------|-------------|----------|
| <i>Abutilon sonneratianum</i> | Wild hibiscus | Indigenous | Herb | |
| <i>Acacia kosiensis</i> | Dune Thorn | Indigenous | Tree | |
| <i>Acokanthera oblongifolia</i> | Poison arrow plant | Indigenous | Tree | |
| <i>Ageratum conyzoides</i> | Blue weed | Indigenous | Herb | |
| <i>Albizia adianthifolia</i> | Flat crown | Indigenous | Tree | |
| <i>Alectra sessiliflora</i> | Yellow Witchweed | Indigenous | Herb | |
| <i>Allophylus natalensis</i> | Witbos | Indigenous | Tree | |
| <i>Aloe thraskii</i> | Dune Aloe | Indigenous | Tree | |
| <i>Ambrosia artemisiifolia</i> | Common ragweed | Alien | Herb | |
| <i>Anredera cordifolia</i> | Madeira vine | Alien | Creeper | |
| <i>Apodytes dimidiata</i> | White pear | Indigenous | Tree | |
| <i>Arundo donax</i> | Spanish reed | Alien | Grass | 1 |
| <i>Asimina triloba</i> | Paw paw | Alien | Tree | |
| <i>Asparagus falcatus</i> | Sicklethorn | Indigenous | Creeper | |
| <i>Asystasia gangetica</i> | Creeping foxglove | Alien | Herb | |
| <i>Bambusoideae</i> | Bamboo | Alien | Tree | |
| <i>Barringtonia racemosa</i> | Powder-puff tree | Protected | Tree | |
| <i>Bidens pilosa</i> | Black Jack | Alien | Herb | |
| <i>Blumea alata</i> | | Indigenous | Herb | |
| <i>Brachylaena discolor</i> | Silver oak | Indigenous | Tree | |
| <i>Bridelia micrantha</i> | Mitzeerie | Indigenous | Tree | |
| <i>Canna indica</i> | Canna | Alien | Herb | 1 |
| <i>Canthium inerme</i> | Turkey berry | Indigenous | Tree | |
| <i>Capparis fascicularis</i> | Zigzag Caper-bush | Indigenous | Creeper | |
| <i>Cardiospermum grandiflorum</i> | Balloon vine | Alien | Herb | 1 |
| <i>Carissa bispinosa</i> | Num-num | Indigenous | Tree | |
| <i>Carpobrotus dimidiatus</i> | Natal sour fig | Indigenous | Herb | |
| <i>Casuarina equisetifolia</i> | | Alien | Tree | 2 |
| <i>Cestrum laevigatum</i> | Ink berry | Alien | Herb | 1 |
| <i>Chamaecrista mimosoides</i> | Fishbone dwarf cassia | Indigenous | Herb | |
| <i>Chromolaena odorata</i> | Triffid weed | Alien | Herb | 1 |
| <i>Chrysanthemoides monilifera</i> | Tick berry | Indigenous | Shrub | |
| <i>Chrysanthemoides monilifera</i> | Tick berry | Indigenous | Shrub | |
| <i>Clausena anisata</i> | Horsewood | Indigenous | Shrub | |
| <i>Clerodendrum glabrum</i> | Tinderwood | Indigenous | Tree | |
| <i>Commelina benghalensis</i> | Bengal wandering Jew | Alien | Herb | |
| <i>Commelina erecta</i> | Slender day flower | Indigenous | Herb | |
| <i>Commicarpus pentandrus</i> | Veldpatats | Indigenous | Herb | |
| <i>Conyza bonariensis</i> | Fleabane | Alien | Herb | |
| <i>Conyza bonariensis</i> | Fleabane | Alien | Herb | |
| <i>Crotalaria lanceolata</i> | Lance leaf rattlebox | Indigenous | Herb | |
| <i>Crotalaria vasculosa</i> | | Rare | Herb | |
| <i>Cryptocarya latifolia</i> | Broad leaf Wild Quince | Rare | Tree | |

| | | | | |
|--|-------------------------|------------------|----------------|---|
| <i>Cucumis zeyheri</i> | | Indigenous | Herb | |
| <i>Cussonia zuluensis</i> | Natal cabbage tree | Indigenous | Tree | |
| <i>Cynanchum ellipticum</i> | | Indigenous | Creeper | |
| <i>Cynanchum natalitium</i> | | Indigenous | Creeper | |
| <i>Cyperus dives</i> | | Indigenous | Sedge | |
| <i>Cyperus rotundus</i> | Purple nut sedge | Alien | Sedge | |
| <i>Cyphostemma flaviflorum</i> | | Rare | Climber | |
| <i>Dalbergia obovata</i> | Climbing flat bean | Indigenous | Climber | |
| <i>Deinbollia oblongifolia</i> | Dune Soap Berry | Indigenous | Tree | |
| <i>Derris trifoliata</i> | | Indigenous | Climber | |
| <i>Desmodium dregeanum</i> | Marsh Desmodium | Indigenous | Herb | |
| <i>Desmodium incanum</i> | Spanish clover | Alien | Herb | |
| <i>Dioscorea cotinifolia</i> | Wild yam | Indigenous | Herb | |
| <i>Distephanus angustifolia</i> | | Indigenous | Shrub | |
| <i>Dovyalis rhamnoides</i> | Common sour berry | Indigenous | Tree | |
| <i>Dracaena aletriformis</i> | Dragon tree | Indigenous | Tree | |
| <i>Dracaena aletriformis</i> | Dragon tree | Protected | Shrub | |
| <i>Drimiopsis maculata</i> | Green drimiopsis | Protected | Bulb | |
| <i>Ekebergia capensis</i> | Cape ash | Indigenous | Tree | |
| <i>Eragrostis ciliaris</i> | Woolly love grass | Indigenous | Grass | |
| <i>Eriobotrya japonica</i> | Loquats | Alien | Tree | 3 |
| <i>Erythrina lysistemon</i> | Coral tree | Indigenous | Tree | |
| <i>Erythrococca berberidea</i> | Prickly Redberry | Indigenous | Tree | |
| <i>Ethulia conyzoides</i> | | Indigenous | Herb | |
| <i>Eucalyptus grandis</i> | Rose gum | Alien | Tree | 2 |
| <i>Euclea natalensis</i> subsp. <i>obovata</i> | Hairy Guarri | Indigenous | Tree | |
| <i>Eugenia capensis</i> | | Protected | Tree | |
| <i>Euphorbia</i> sp. | Poinsettia | Alien | Shrub | |
| <i>Ficus burkei</i> | Common wild fig | Indigenous | Tree | |
| <i>Ficus burtt-davyi</i> | | Indigenous | Tree | |
| <i>Ficus natalensis</i> | Natal Fig | Indigenous | Tree | |
| <i>Ficus sur</i> | Cape fig | Indigenous | Tree | |
| <i>Gloriosa superba</i> | Flame lily | Indigenous | Bulb | |
| <i>Gomphocarpus physocarpus</i> | Milkweed | Indigenous | Herb | |
| <i>Gomphrena celosioides</i> | Bachelor's button | Alien | Herb | |
| <i>Grewia occidentalis</i> | Cross berry | Indigenous | Tree | |
| <i>Gymnosporia arenicola</i> | Coast spike-thorn | Indigenous | Tree | |
| <i>Helichrysum kraussii</i> | Yellow everlasting | Indigenous | Herb | |
| <i>Helichrysum nudifolium</i> | Hottentots Tea | Indigenous | Herb | |
| <i>Helichrysum ruderale</i> | Yellow everlasting | Indigenous | Herb | |
| <i>Hewittia malabarica</i> | | Indigenous | Herb | |
| <i>Hibiscus tiliaceus</i> | Sea Hibiscus | Indigenous | Climber | |
| <i>Indigofera suffruticosa</i> | Wild indigo | Alien | Herb | |
| <i>Ipomoea cairica</i> | Morning glory | Alien | Herb | |
| <i>Ipomoea pes-caprae</i> | Beach Morning Glory | Alien | Creeper | |
| <i>Ipomoea purpurea</i> | Common Morning Glory | Alien | Creeper | 1 |
| <i>Ischaemum fasciculatum</i> | | Indigenous | Grass | |

| | | | | |
|--|-----------------------------|------------------|--------------|---|
| <i>Isoglossa woodii</i> | Buck weed | Indigenous | Herb | |
| <i>Kyllinga alba</i> | | Indigenous | Sedge | |
| <i>Kyllinga</i> sp. | Witbiesie | Indigenous | Sedge | |
| <i>Lactuca inermis</i> | Wild lettuce | Alien | Herb | |
| <i>Lagenaria sphaerica</i> | Wild melon | Indigenous | Herb | |
| <i>Lagerstroemia speciosa</i> | Pride of India | Alien | Tree | |
| <i>Lantana camara</i> | Tick berry | Alien | Shrub | 1 |
| <i>Leersia hexandra</i> | Swamp rice grass | Indigenous | Grass | |
| <i>Ludwigia octovalvis</i> | Raven primrose willow | Indigenous | Herb | |
| <i>Mangifera</i> sp. | Mango tree | Alien | Tree | |
| <i>Mariscus</i> sp. | | Indigenous | Sedge | |
| <i>Mariscus</i> sp. | | | Sedge | |
| <i>Maytenus procumbens</i> | Dune Koko Tree | Indigenous | Tree | |
| <i>Melia azedarach</i> | Syringa | Alien | Tree | 3 |
| <i>Melinis repens</i> | Natal red top | Indigenous | Grass | |
| <i>Mimusops caffra</i> | Coastal Red Milkwood | Protected | Tree | |
| <i>Morus alba</i> | White mulberry | Alien | Tree | 3 |
| <i>Nephrolepis exaltata</i> | Sword Fern | Indigenous | Fern | |
| <i>Nidorella auriculata</i> | | Indigenous | Herb | |
| <i>Oenothera stricta</i> | Evening Primrose | Alien | Herb | |
| <i>Opismenus hirtellus</i> | Basket grass | Indigenous | grass | |
| <i>Panicum deustum</i> | Bufalo Grass | Indigenous | grass | |
| <i>Panicum maximum</i> | Guinea grass | Indigenous | Grass | |
| <i>Paspalum scrobiculatum</i> | Kodo Millet | Alien | Grass | |
| <i>Paspalum urvillei</i> | Vasey grass | Alien | Grass | |
| <i>Pavetta lanceolata</i> | Weeping Brides bush | Indigenous | Tree | |
| <i>Pavetta revoluta</i> | Dunes Brides bush | Indigenous | Tree | |
| <i>Persicaria attenuata</i> | Bristly snakeroot | Indigenous | Herb | |
| <i>Phoenix reclinata</i> | Wild date palm | Indigenous | Palm | |
| <i>Phragmites australis</i> | Common reed | Alien | Grass | |
| <i>Phragmites mauritanum</i> | | Alien | Grass | |
| <i>Plectranthus barbatus</i> var. <i>grandis</i> | Woolly Plectranthus | Alien | Herb | 3 |
| <i>Potamogeton pusillus</i> | Lesser Pond weed | Indigenous | Aquatic Herb | |
| <i>Priva cordifolia</i> | | Indigenous | Herb | |
| <i>Pseudotsuga menziesii</i> | Douglas fir | Alien | Tree | |
| <i>Psidium guajava</i> | Guava tree | Alien | Tree | 2 |
| <i>Psychotria capensis</i> | Black bird-berry | Indigenous | Tree | |
| <i>Pupalia lappacea</i> | Forest Bur | Indigenous | Herb | |
| <i>Putterlickia verrucosa</i> | Mock forest spike thorn | Indigenous | Tree | |
| <i>Pycneus mundtii</i> | | Indigenous | Sedge | |
| <i>Rhoicissus digitata</i> | Baboon grape | Indigenous | Climber | |
| <i>Rhoicissus rhomboidea</i> | Glossy forest grape | Indigenous | Climber | |
| <i>Rhoicissus tomentosa</i> | | | | |
| <i>Rhoicissus tridentata</i> | Bushman's grape | Indigenous | Climber | |
| <i>Rhynchosia caribaea</i> | Monya-mali | Indigenous | Herb | |
| <i>Richardia brasiliensis</i> | Brazilian clover | Alien | Herb | |
| <i>Ricinus communis</i> | Castor oil plant | Alien | Shrub | 2 |
| <i>Scadoxus puniceus</i> | Snake Lily | Protected | Bulb | |
| <i>Schinus terebinthifolius</i> | Brazilian pepper tree | Alien | Tree | 1 |

| | | | | |
|---|------------------------------|------------------|-------------|---|
| <i>Sclerocarya birrea</i> subsp. <i>caffra</i> | Marula tree | Protected | Tree | |
| <i>Scutia myrtina</i> | Cat thorn | Indigenous | Tree | |
| <i>Searsia chirindensis</i> | Red currant | Indigenous | Tree | |
| <i>Secamone alpini</i> | Monkey rope | Indigenous | Climber | |
| <i>Senecio helminthioides</i> | | Indigenous | Herb | |
| <i>Senecio polyanthemoides</i> | | Indigenous | Herb | |
| <i>Senna didymobotrya</i> | Peanut butter senna | Alien | Shrub | 3 |
| <i>Sesbania punicea</i> | Red Sesbania | Alien | Shrub | 1 |
| <i>Setaria lindenbergiana</i> | | Indigenous | Grass | |
| <i>Setaria megaphylla</i> | Broad-leafed bristle grass | Indigenous | Grass | |
| <i>Setaria sagittifolia</i> | Arrow grass | Indigenous | Grass | |
| <i>Sida dregei</i> | Spider leg | Indigenous | Herb | |
| <i>Smilax anceps</i> | | Indigenous | Creeper | |
| <i>Solanum lycopersicon</i> | Tomato | Alien | Shrub | |
| <i>Solanum mauritianum</i> | Bugweed | Alien | Tree | 1 |
| <i>Solanum panduriforme</i> | Bitter apple | Alien | Shrub | |
| <i>Sorghum halepense</i> | Johnson grass | Alien | Grass | |
| <i>Spilanthes decumbens</i> | | Alien | Herb | |
| <i>Sporobolus pyramidalis</i> | | Indigenous | Grass | |
| <i>Stenotaphrum secundatum</i> | St. Augustine grass | Alien | Grass | |
| <i>Strelitzia nicolai</i> | Giant White Bird of Paradise | Indigenous | Tree | |
| <i>Syzygium cordatum</i> | Umdoni | Indigenous | Tree | |
| <i>Tagetes minuta</i> | Southern cone marigold | Alien | Herb | |
| <i>Taraxacum officinale</i> | Common dandelion | Alien | Herb | |
| <i>Tarenna pavettoides</i> | Brides bush | Indigenous | Tree | |
| <i>Tibouchina</i> sp. | Glory Bush | Alien | Shrub | |
| <i>Tipuana tipu</i> | Tipu tree | Alien | Tree | 3 |
| <i>Tragia glabrata</i> var. <i>glabrata</i> | Stinging nettle creeper | Indigenous | Herb | |
| <i>Trema orientalis</i> | Pigeon wood | Indigenous | Tree | |
| <i>Tricalysia sonderiana</i> | Coast Jackalcoffee | Indigenous | Tree | |
| <i>Trichilia dregeana</i> | Forest mahogany | Indigenous | Tree | |
| <i>Trichilia emetica</i> subsp. <i>emetica</i> | Natal mahogany | Indigenous | Tree | |
| <i>Triumfetta rhomboidea</i> | | Indigenous | Herb | |
| <i>Typha capensis</i> | Bulrush | Indigenous | Sedge | |
| <i>Vigna vexillata</i> | Zombie Pea | Indigenous | Herb | |
| <i>Wahlenbergia</i> cf. <i>grandiflora</i> | Tenane | Indigenous | Herb | |
| <i>Zornia capensis</i> subsp. <i>capensis</i> | Caterpillar Bean | Indigenous | Herb | |